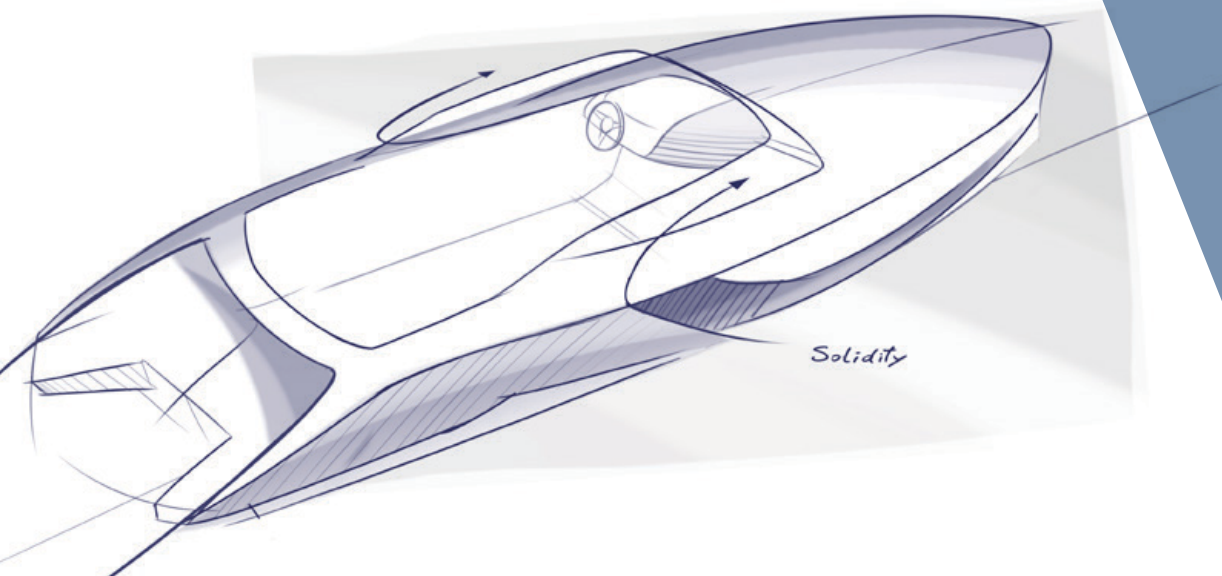




OCCHILUPO
YACHT & CARBON



"A draw is simply a line going for a walk..."





*Superbia 28 is just this: three lines walking around
Three ideas, three feelings of Stability, Dynamicity Sportiness
Simple pure line with character and a strong Personality behind
Lines sculpted around the ego of a Young at heart, Dynamic Owner*



***“We are just
the beginning
of a new Era”***

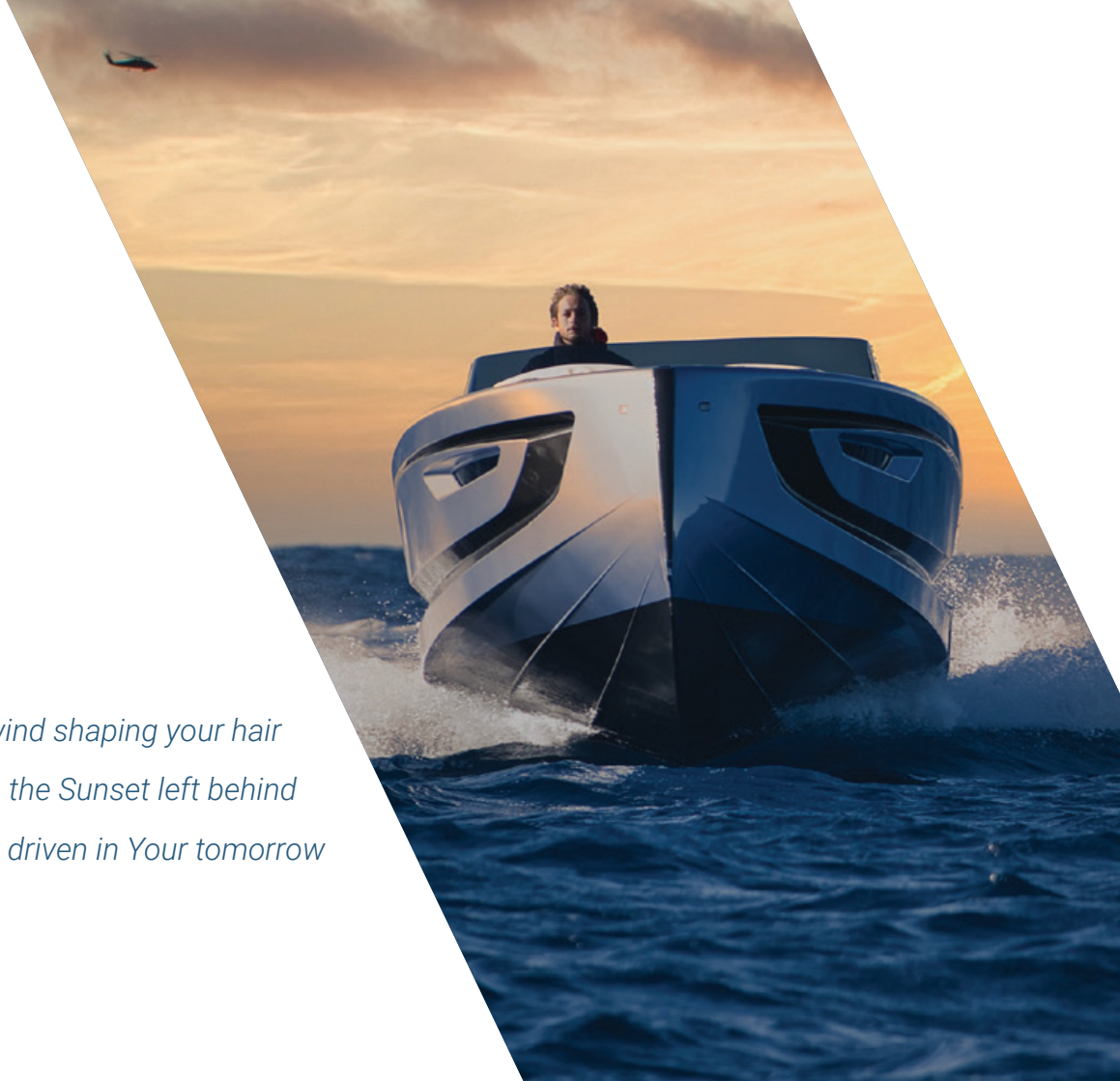
*Superbia 28 is just the Vision
of what will come over*







*With the wind shaping your hair
With the Sunset left behind
You will be fast driven in Your tomorrow*





*In Your Hands the Power
In Your Brain the Control
Only You will be the One to unleash the Force*

*And She will be the One you can rely...
at any turn in any Sea...*

*She can be Aggressive and Strong..
But She can be even so Elegant...
A Lady of the Sea...*





You, Your Lady...
Two Souls...
everything will be perfect
Leaving the World behind
Living your time with Her...



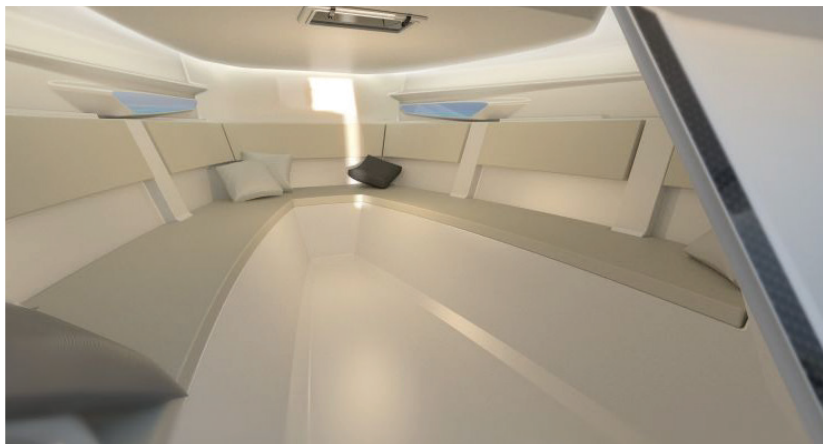
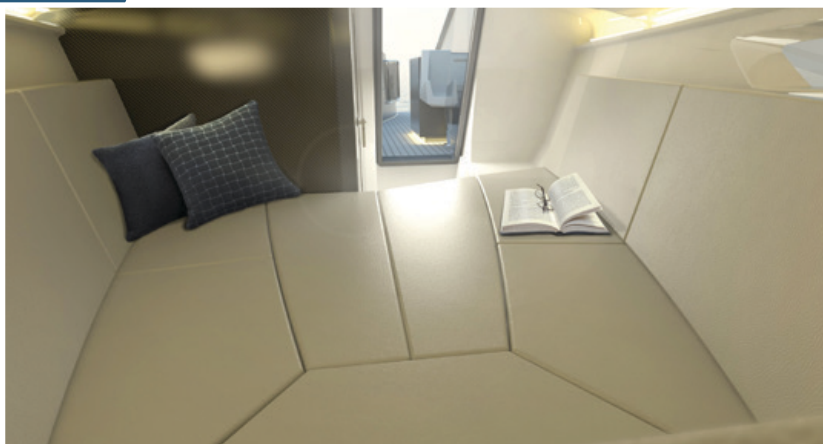


Be inside the Dream of a Different Experience where Superbia 28, yours Superbia 28 will lead you.

Be the main character, be the Star of the Movie of your life.







Superbia 28 has been developed using
the utmost care in optimizing internal spaces.

An owner suite,
with a wide double bed and a separated toilet,
complete the sailing experience.

A nest made of the finest upholstery
from italian excellences.

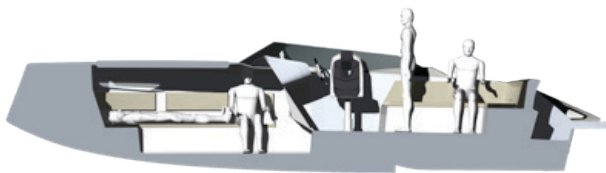
Our care, our taste will guide the Owner
in the choice of the most suitable
dress for His own Superbia 28.





"Superbia 28 is completely built in Carbon fiber. All the cutting edge technologies, coming directly from Aerospace and Automotive Industry, such as Computational Fluid Dynamics, Structural Analysis and Vacuum Resin infusion, has been employed in all the phases of Design and Production aiming to achieve the highest power to weight ratio in the hull construction. This yield to have a hull with outstanding performances.





LOA..... 28 ft

Beam.....8.2ft

Draft..... 16.5 "

Max Speed..... 60 kn

Cruise speed 34 kn

Empty weight load..... 1764 lb

Max pax..... 7

Design cat.....B/C

Engine.....2 x 200/225/250 HP

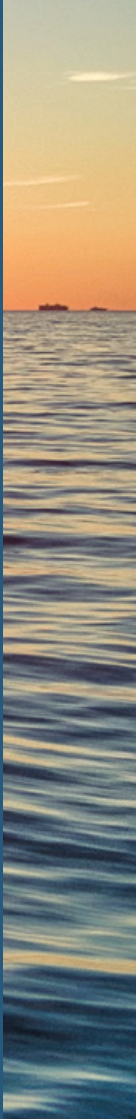
Yacht designerGianluca Meschino

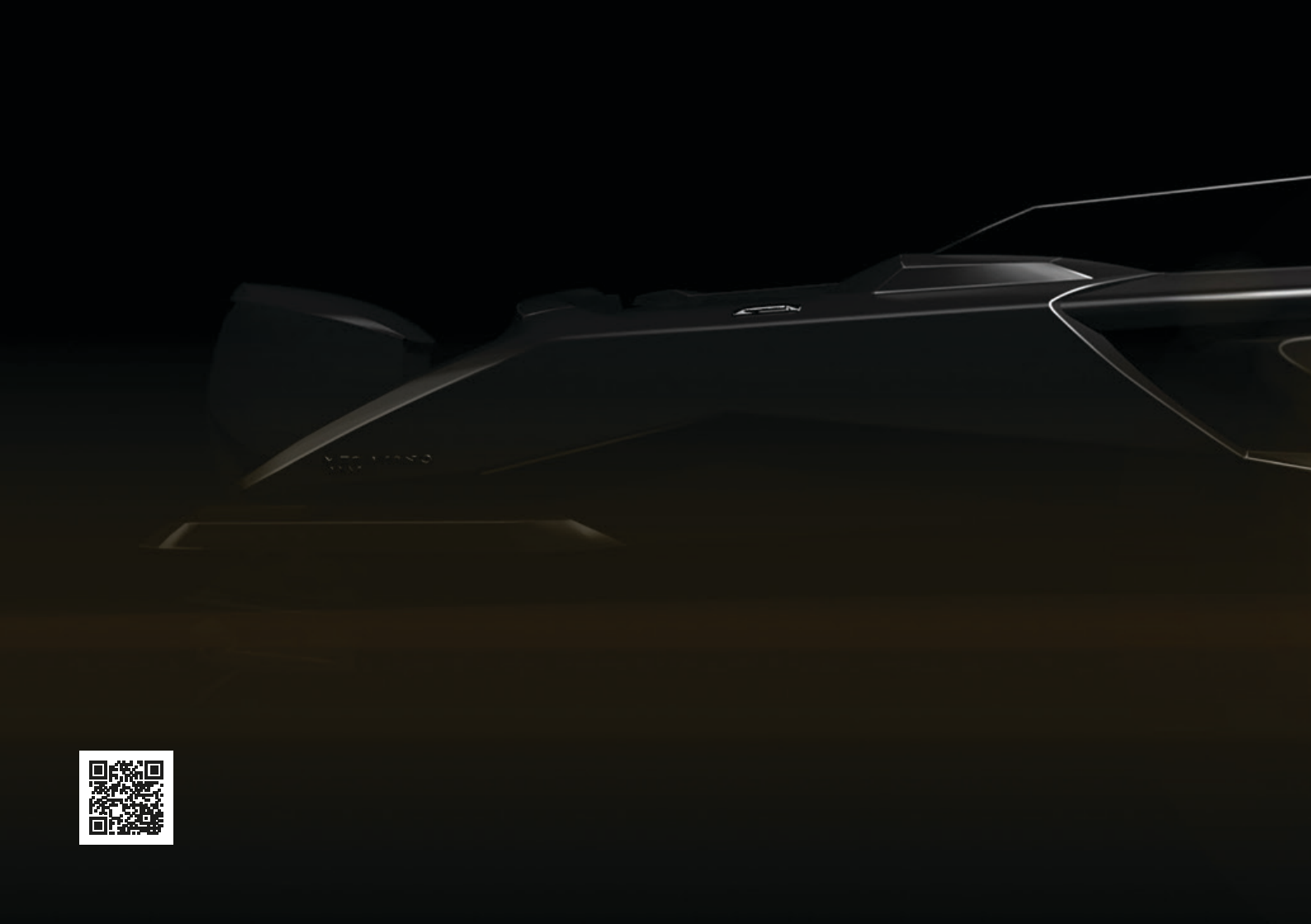




Occhilupo Y&C Ltd
Via G. Carducci 39
40014 Bologna - ITALY

www.occhilupoyatchandcarbon.com

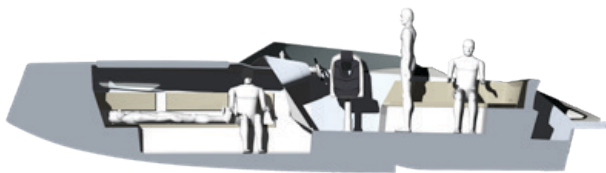






"Superbia 28 is completely built in Carbon fiber. All the cutting edge technologies, coming directly from Aerospace and Automotive Industry, such as Computational Fluid Dynamics, Structural Analysis and Vacuum Resin infusion, has been employed in all the phases of Design and Production aiming to achieve the highest power to weight ratio in the hull construction. This yield to have a hull with outstanding performances.





LOA..... 28 ft

Beam.....8.2ft

Draft..... 16.5 "

Max Speed..... 60 kn

Cruise speed 34 kn

Empty weight load..... 1764 lb

Max pax..... 7

Design cat.....B/C

Engine.....2 x 200/225/250 HP

Yacht designerGianluca Meschino